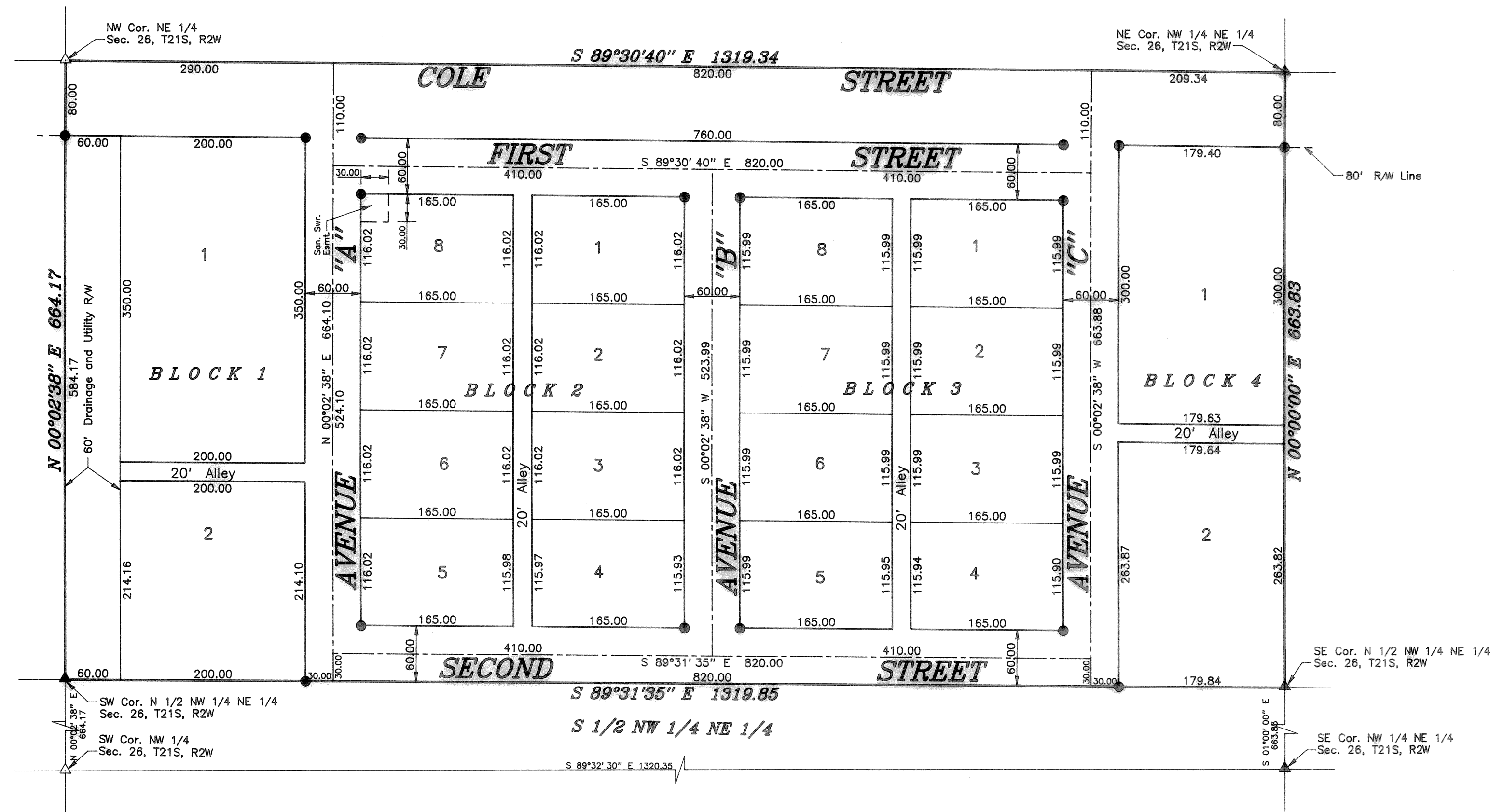


FINAL PLAT
MOUNDRIIDGE COMMERCIAL DEVELOPMENT

A SUBDIVISION OF THE NORTH HALF OF THE NORTHWEST
QUARTER OF THE NORTHEAST QUARTER OF SECTION 26,
TOWNSHIP 21 SOUTH, RANGE 2 WEST OF THE 6TH PRINCIPAL
MERIDIAN IN McPHERSON COUNTY, KANSAS



LEGEND
▲ - Sectional Monument Found
▲ - Sectional Monument Set
● - 5/8" x 24" Iron Rebar Set

OWNERS CERTIFICATE AND DEDICATION

This is to certify that the undersigned owner(s) of the land described in the Surveyor's Certificate: have caused the same to be surveyed and subdivided on the accompanying plat into lots, blocks, streets and other public ways under the name of "MOUNDRIIDGE COMMERCIAL DEVELOPMENT", a Subdivision of the North Half of the Northwest Quarter of the Northeast Quarter of Section 26, Township 21 South, Range 2 West of the 6th Principal Meridian in McPherson County, Kansas; that all highways, streets, alleys, easements and public grounds as denoted on the plat are hereby dedicated to and for the use of the public for the purpose of constructing, operating, maintaining and repairing public improvements; further that the land contained herein is held and shall be conveyed subject to any applicable restrictions, reservations, and covenants now on file or hereafter filed in the Office of the Register of Deeds of McPherson County, Kansas.

Date Signed: 2-15-94

City of Moundridge by:

Maurice Stephan, Mayor
Ron Huxman, City Clerk

Moundridge Food Market, Inc. by:

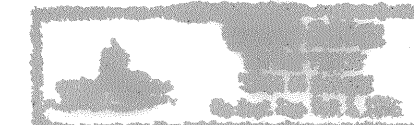
David O. Frazer, President
Ella Gale Frazer, Secretary

Dora E. Unruh
City Clerk

NOTARY CERTIFICATE

STATE OF KANSAS)
COUNTY OF MCPHERSON) SS

The foregoing instrument was acknowledged before me this 15th day of February, 1994, by Maurice Stephan, Mayor and Ron Huxman, City Clerk on behalf of the City of Moundridge, and by David O. Frazer and Ella Gale Frazer, President and Secretary, respectively, of Moundridge Food Market, Inc., a Kansas Corporation, on behalf of said corporation and by Dora E. Unruh.



My Commission expires: 12-31-96

SURVEYOR'S CERTIFICATE AND DESCRIPTION

I, the undersigned, licensed land surveyor of the State of Kansas, do hereby certify that the following described tract of land was surveyed on February 22, 1994, and the accompanying final plat prepared and that all the monuments shown hereon actually exist and their positions are correctly shown to the best of my knowledge and belief; The North Half of the Northwest Quarter of the Northeast Quarter of Section 26, Township 21 South, Range 2 West of 6th Principal Meridian in McPherson County, Kansas.

Signed February 7, 1994

Daniel E. Garber RLS 683

PLANNING COMMISSION CERTIFICATE

STATE OF KANSAS)
CITY OF MOUNDRIIDGE) SS

This plat was approved by the Moundridge City Planning Commission on 2-7, 1994.

Robert D. Burnett, Chairman
ATTEST: Ruth E. Ottmann, Secretary

COUNTY CLERK AND CITY CLERK CERTIFICATE

STATE OF KANSAS)
COUNTY OF MCPHERSON) SS
CITY OF MOUNDRIIDGE)

We the undersigned, County Clerk of McPherson County, Kansas and City Clerk of the City of Moundridge, Kansas, within our respective jurisdictions, do hereby certify that at the date of this certificate, all currently due and owing taxes and special assessments of any kind assessed against any of the land included in this plat, have been paid.

Date Signed: 10-21-94
County Clerk
City Clerk

GOVERNING BODY CERTIFICATE
STATE OF KANSAS)
CITY OF MOUNDRIIDGE) SS

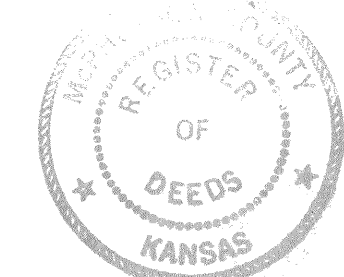
The dedications on this plat, if any, are hereby accepted by the Governing Body of the City of Moundridge, Kansas, on February 15, 1994.

Maurice Stephan, Mayor
ATTEST: Ron Huxman, City Clerk

Entered on transfer record on 10-21-94, 1994.
James R. Huxman, County Clerk

REGISTER OF DEEDS CERTIFICATE

State of Kansas, McPherson Co., SS: 5238
This instrument was filed for record on the 21st day of Oct., 1994, at 8:30 a.m., and duly recorded in book 6146, page 18.
Register of Deeds
\$20.00



FINAL PLAT

GARBER SURVEYING SERVICE, P.A.
HUTCHINSON, KANSAS 67501
423 WEST FIRST AVENUE
316-665-7032

MOUNDRIIDGE COMMERCIAL DEV.
MOUNDRIIDGE, KANSAS

Drawn By: WJA
Scale: 1"=100'
Date: 02/07/1994
Checked By: DEG
Job No.: G93-58
Sheet 1 of 1 Sheets